



The Best For Over 85 Years!

TOTAL OVERFILL PROTECTION

UST OVERFILL VALVE

Application -

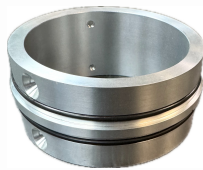
Prevents overfills and fuel spillage when fueling underground tanks, which reduces the risk of fire, contamination, and costly clean up.

Part Number - 39



One moving part

**ALL DROP TUBES
PRE-DRILLED FOR EASY
INSTALLATION!**



39-DTC

UNIVERSAL Advantage

Only Universal has one moving part to eliminate any line shock. This valve is designed to shut off gradually when the fuel reaches a pre-determined level, preventing line shock during gravity drops. When there's no line shock, there's no stress put on the system.

Features-

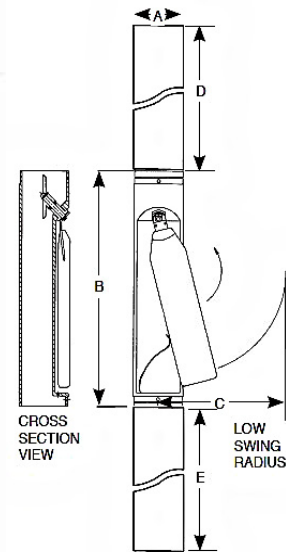
- ✓ Faster deliveries with less restriction
- ✓ Only one moving part
- ✓ Easily retro-fitted in existing tanks
- ✓ Completely automatic operation
- ✓ Easy field installation without breaking ground
- ✓ Enables manual gauging of tank
- ✓ No minimum flow rate required for shut off

Model#	A	B	C	D	E	Weight (lbs.)
39-04	4"	18"	10"			6
39-0710	4"	18"	10"	7'	10' *	30

39-0710 shipping Dims 7' x 8" x 8"

Replacement Parts

Part Numbers	Description
39-11	Screw For Spring
39-12	Body O-Ring
39-13	Set Screw (Coupling Nut)
39-17	Body Screw
39-18	Adhesive Pack
39-19	Coupling Nut
39-2	Float
39-INS	Installation Kit
39-DTC	Drop Tube Connector



* 10' Bottom drop tube now (2) 5Ft sections with a drop tube connector.

No more freight oversize charges.

IMPORTANT: In order to prevent product spillage from the Underground Storage Tank (UST), properly maintained delivery equipment and proper connection at the tight-fill adapter are essential. Delivery personnel should be managed and trained to inspect delivery elbows and hoses for damaged and missing parts. They should always make certain there is a positive connection between the adapter and elbow. If delivery equipment is not properly maintained, or the elbow is not securely coupled to the adapter, a serious spill may result when the 39-04 closes, causing a hazard and environmental contamination.

NOTE: The Universal Valve 39-04 is designed for use on tight-fill gravity drop applications only. Do not use for pressure fill applications.

Notice: Universal Valve Co., products must be used in compliance with applicable federal, state, and local laws and regulations. Product selection should be based on physical specifications and limitations and compatibility with the environment and material to be handled. Universal Valve Co., makes no warranty of fitness for a particular use. All illustrations and specifications in this literature are based on the latest production information available at the time of publication. Prices, materials, and specification are subject to change at any time, and models may be discontinued at any time, in either case, without notice or obligation.

UNIVERSAL VALVE COMPANY

478 Schiller Street, Elizabeth, NJ 07206 • (800) 223-0741 • (908) 351-0606 • Fax: (908) 351-0369 • universalvalve.com

© 2026 Universal Valve Company, Inc.