



Simply The Best!

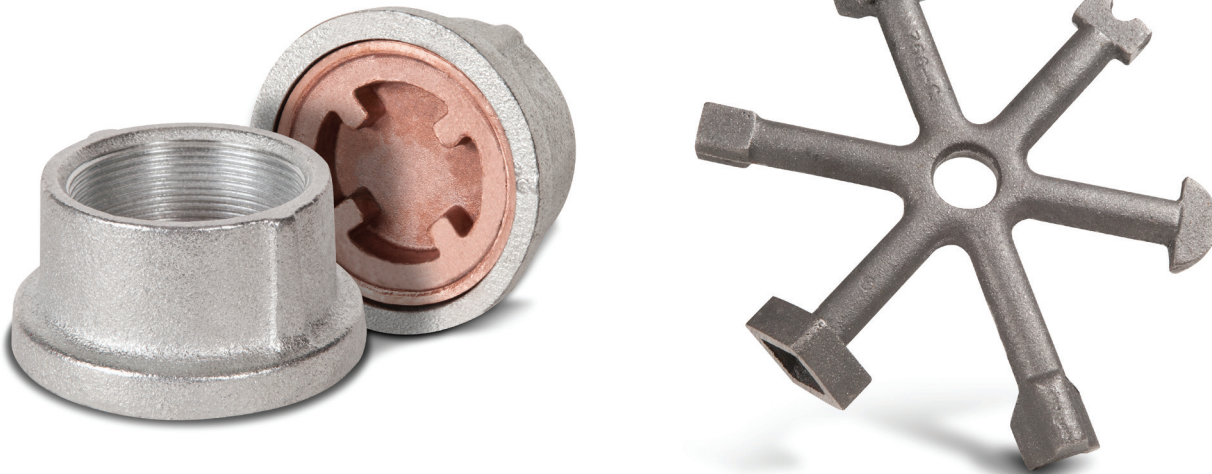
LIQUID TIGHT FUEL BOXES

FLUSH MOUNT FILL BOX

Application -

Mounts flush to connect the underground tank fill line to the surface, without a manhole enclosure.

Part Number - 701, 756



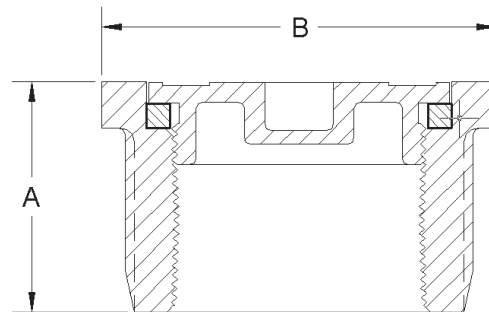
Features -

- ✓ Ideal for fuel, oil, waste oil, and diesel fuel applications
- ✓ Designed to withstand heavy driveway traffic
- ✓ Recommended for applications not requiring security or containment

Construction -

- A threaded bronze cover
- Heavy duty cast iron body
- Buna-N gasket

Model	Thread Size	Weight (lbs.)	A	B
701-20	2"	2.3	2-1/8"	3-5/8"
756	Multi-purpose fill box wrench	2.4		



Replacement Parts

Part Numbers	Description
701-2-B	2" Cap
701-2-C	2" Buna Gasket

Notice: Universal Valve Co., products must be used in compliance with applicable federal, state, and local laws and regulations. Product selection should be based on physical specifications and limitations and compatibility with the environment and material to be handled. Universal Valve Co., makes no warranty of fitness for a particular use. All illustrations and specifications in this literature are based on the latest production information available at the time of publication. Prices, materials, and specification are subject to change at any time, and models may be discontinued at any time, in either case, without notice or obligation.

UNIVERSAL VALVE COMPANY

478 Schiller Street, Elizabeth, NJ 07206 • (800) 223-0741 • (908) 351-0606 • Fax: (908) 351-0369 • universalvalve.com

© 2017 Universal Valve Company, Inc.