



**Quality and Reliability, Since 1932!**



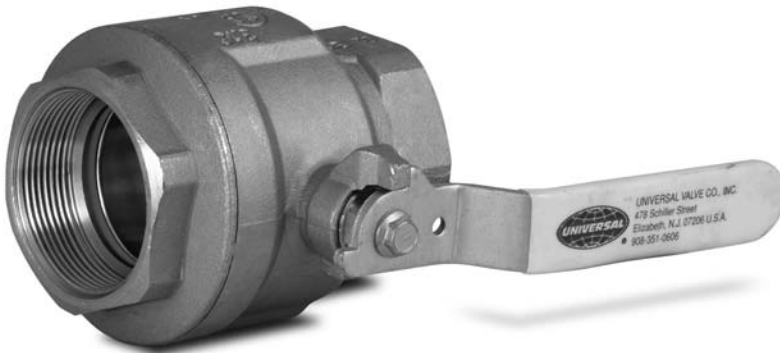
# BALL VALVES

## FULL PORT

### Application -

Allows easy line shut off, which prevents system shut-down during maintenance.

### Part Numbers - 213FP



### Features -

- ✓ Allows easy line testing
- ✓ Rugged brass body
- ✓ Compatible with E-85 (Model SS)

### Construction -

- Stainless steel ball with Teflon seals
- Brass body
- Plastic coated handle

Model	Size
213FP-025	1/4" Brass Ball Valve
213FP-025-L	1/4" Brass Ball Valve Locking
213FP-0375	3/8" Brass Ball Valve
213FP-0375-L	3/8" Brass Ball Valve Locking
213FP-050	1/2" Brass Ball Valve
213FP-50-L	1/2" Brass Ball Valve Locking
213FP-50-SS	1/2" Stainless Steel Ball Valve Locking
213FP-10	1" Brass Ball Valve
213FP-10-L	1" Brass Ball Valve Locking
213FP-10-SS	1" Stainless Steel Ball Valve Locking
213FP-125	1-1/4" Brass Ball Valve
213FP-125-L	1-1/4" Brass Ball Valve Locking
213FP-15	1-1/2" Brass Ball Valve
213FP-15-L	1-1/2" Brass Ball Valve Locking
213FP-15-SS	1-1/2" Stainless Steel Ball Valve Locking

Model	Size
213FP-20	2" Brass Ball Valve
213FP-20-L	2" Brass Ball Valve Locking
213FP-20SS	2" Stainless Steel Ball Valve Locking
213FP-25	2-1/2" Brass Ball Valve
213FP-30	3" Brass Ball Valve
213FP-40	4" Brass Ball Valve
213FP-750	3/4" Brass Ball Valve
213FP-750-L	3/4" Brass Ball Valve Locking
213FP-750-SS	3/4" Stainless Steel Ball Valve Locking

Notice: Universal Valve Co., products must be used in compliance with applicable federal, state, and local laws and regulations. Product selection should be based on physical specifications and limitations and compatibility with the environment and material to be handled. Universal Valve Co., makes no warranty of fitness for a particular use. All illustrations and specifications in this literature are based on the latest production information available at the time of publication. Prices, materials, and specification are subject to change at any time, and models may be discontinued at any time, in either case, without notice or obligation.

### UNIVERSAL VALVE COMPANY

478 Schiller Street, Elizabeth, NJ 07206 • (800) 223-0741 • (908) 351-0606 • Fax: (908) 351-0369 • [universalvalve.com](http://universalvalve.com)

© 2009 Universal Valve Company, Inc.