



Composite Technology for Today's Needs

LIGHT WEIGHT MULTI-PURPOSE MANHOLES

COMPOSITE MANHOLES

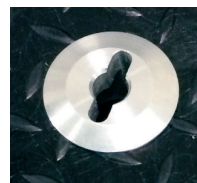
**UNIVERSAL
Advantage**



Application -

All new composite and resin technology is used to ensure a lightweight and heavy duty manhole. This technology produces a H-25 load rated cover, built to withstand heavier traffic patterns associated with high volume c-stores. Available in 39" and 44" covers and an optional key lift handle. Be sure, be safe, Specify Universal.

Part Number - 108



Optional Keylift Slot

Features -

- ✓ Light weight lid for easy removal
- ✓ Domed lid to shed water
- ✓ Anti-slip surface
- ✓ Interchangeable with other manufacturers' lids
- ✓ H-25 and EN-125-C load ratings
- ✓ Replaceable spring loaded recessed handle
- ✓ Patented bottom flare locks in concrete
- ✓ UV Resistant
- ✓ Optional Keylift Slot

Construction -

- Composite Lid
- Galvanized 14 gauge skirt
- Steel handle
- Fabricated Steel Ring

H-25
LOAD RATED

Notice: Universal Valve Co., products must be used in compliance with applicable federal, state, and local laws and regulations. Product selection should be based on physical specifications and limitations and compatibility with the environment and material to be handled. Universal Valve Co., makes no warranty of fitness for a particular use. All illustrations and specifications in this literature are based on the latest production information available at the time of publication. Prices, materials, and specification are subject to change at any time, and models may be discontinued at any time, in either case, without notice or obligation.

UNIVERSAL VALVE COMPANY

478 Schiller Street, Elizabeth, NJ 07206 • (800) 223-0741 • (908) 351-0606 • Fax: (908) 351-0369 • universalvalve.com

© 2016 Universal Valve Company, Inc.

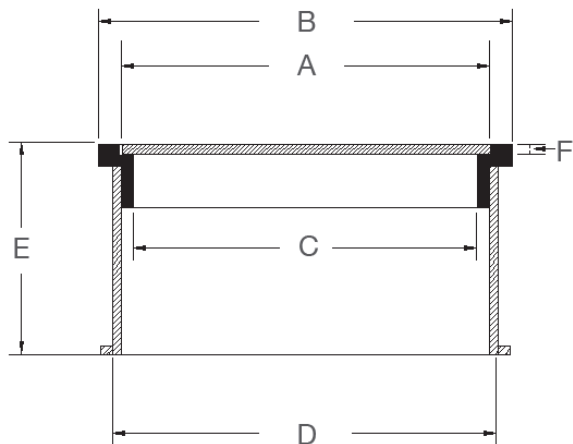


Composite Technology for Today's Needs

LIGHT WEIGHT MULTI-PURPOSE MANHOLES

COMPOSITE MANHOLES

UNIVERSAL
Advantage



Model	A	B	C	D	E	F
108-39	39-1/2"	39-3/4"	37-1/2"	38"	11"	1"
108-44	44-1/4"	44-1/2"	42"	43"	11"	1"

Composite Manhole Weights

39" cover only 73 lbs	39" Cover, Ring and skirt 116 lbs
44" cover only 83 lbs	44" Cover, Ring and skirt 136 lbs

Model Number	Description
108-3910	39" Composite Manhole
108-3910-KL	39" Composite Manhole w/ Key lift slot
108RT-3910	39" Rain Tight manhole (bolt down lid)
108RT-3910-KL	39" Rain Tight manhole (bolt down lid) w/ key lift slot
108-4410	44" Composite Manhole
108-4410-KL	44" Composite Manhole w/ Key lift slot
108RT-4410	44" Rain Tight manhole (bolt down lid)
108RT-4410-KL	44" Rain Tight manhole (bolt down lid) w/ key lift slot

Replacement Part Numbers

Model Number	Description
108-39-CO	39" Cover only
108-39-CO-KL	39" Cover only w/ Key lift slot
108-44-CO	44" Cover Only
108-44-CO-KL	44" Cover w/ Key lift slot

Replacement Lids for Competitors' Composite Manholes

- 39" standard cover will fit OPW/EBW/EMCO/FLEX-ing
- 44" standard cover will fit OPW/EBW/EMCO/FLEX-ing

Notice: Universal Valve Co., products must be used in compliance with applicable federal, state, and local laws and regulations. Product selection should be based on physical specifications and limitations and compatibility with the environment and material to be handled. Universal Valve Co., makes no warranty of fitness for a particular use. All illustrations and specifications in this literature are based on the latest production information available at the time of publication. Prices, materials, and specification are subject to change at any time, and models may be discontinued at any time, in either case, without notice or obligation.

UNIVERSAL VALVE COMPANY

478 Schiller Street, Elizabeth, NJ 07206 • (800) 223-0741 • (908) 351-0606 • Fax: (908) 351-0369 • universalvalve.com

© 2016 Universal Valve Company, Inc.