



**New York City 15 gallon Spill
Containment Manhole**

INSTALLATION INSTRUCTIONS

Product Description

The New York City version of our spill containment manholes is specifically designed for shallow burial installations. It has a 15-gallon capacity, 18" H2O load rated manhole cover, rain tight below grade aluminum cover and an automatic internal drain valve.

***Important Note** Prior to installation read these instructions completely. Check to make sure all parts are included. Do not substitute parts for those provided, unless specified. Failure to properly follow these instructions may result in improper operation of the valve.*

Parts List

- NYCFD Spill Containment Manhole
- Model 69RT Rain tight Manhole and Ring
- Model 701-30 Tight Fill Cap
- Flame Suppression Screen
- Automatic Drain Valve
- 4 Foam Blocks
- 88-18 Manhole with Cast Ring

TEST CONTAINMENT MANHOLE FOR LEAKS BY FOLLOWING THE TESTING PROCEDURE IN THIS PAMPHLET.

Warranty Statement

All UNIVERSAL products are guaranteed to be free from defects in materials and workmanship. All products are thoroughly tested before shipment and guaranteed to the extent of replacing only products found to be defective in manufacture. We cannot, however, allow claims for labor or consequential damage resulting from purchase, installation or misapplication of our products.

Our responsibility ceases when products are accepted by transportation carriers. All goods are at the risk of the purchaser after they have been delivered by us to the carrier and receipt obtained from same (in good order).

The right is reserved to make changes in pattern, design or materials when deemed necessary, without prior notice. Products, which have become obsolete by reason of design change or discontinued, as a manufactured item may not be returned for credit.

THIS WARRANTY IS IN LIEU OF ALL OTHER WARRANTIES, EXPRESS OR IMPLIED, AND SPECIFICALLY THE WARRANTIES OF MERCHANTABILITY AND FITNESS FOR A PARTICULAR PURPOSE.

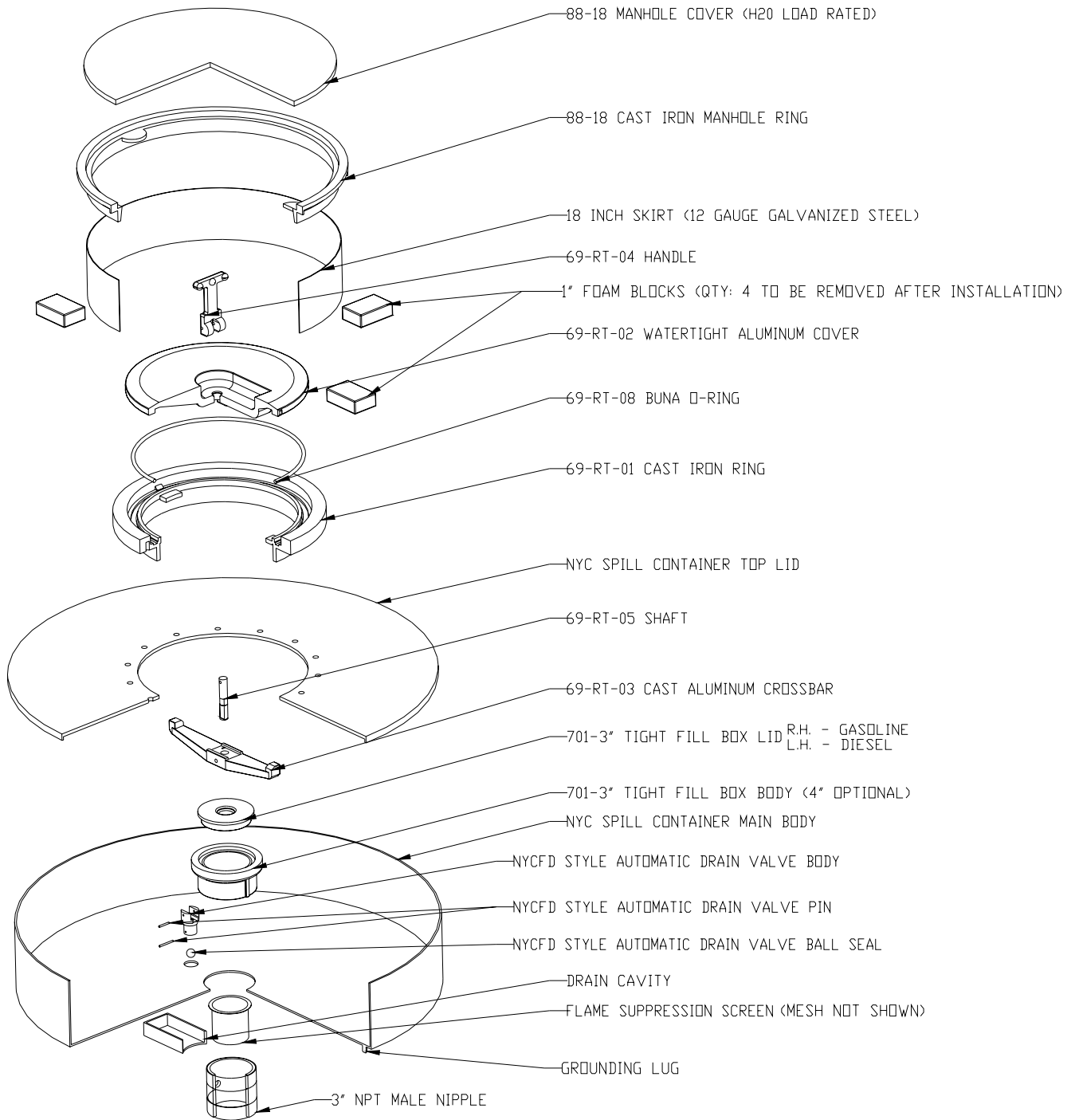
Warning *Universal Valve products should be used in compliance with applicable federal, state and local laws and regulations. Product selection should be based on physical specifications and limitations and compatibility with environment and material to be handled. Universal Valve makes no warranty of fitness for a particular use*

Installation Instructions

- 1) Coat riser pipe with thread sealant. Make sure sealant is compatible with product being used in tank.
 - 2) Install spill containment manhole by positioning over riser and threading down onto riser hand tight. Use pipe wrench to tighten down onto riser by grasping on pipe section underneath spill container.
 - 3) Use the four included foam blocks to place the skirt of the 18" manhole on top of the Spill Container. *Be sure to remove these foam blocks when installation is complete.*
- Pour pea gravel back fill and concrete after checking for leaks as outlined below.

TEST CONTAINMENT MANHOLE FOR LEAKS BY FOLLOWING THE PROCEDURES OUTLINED BELOW.

Every unit should be tested for leaks before and after installation. Fill the unit completely with water. If the water level drops within one hour, a leak exists. If a leak exists, check the drain valve for proper seating, and re-test. If the unit continues to leak, then replace the entire unit with another and re-test. After the concrete has been poured, re-test the unit to make sure no damage occurred during the installation. This unit should be tested and inspected every 6 months, or more frequently if you are a high volume user or if conditions warrant. Damaged or leaking units should be replaced immediately.



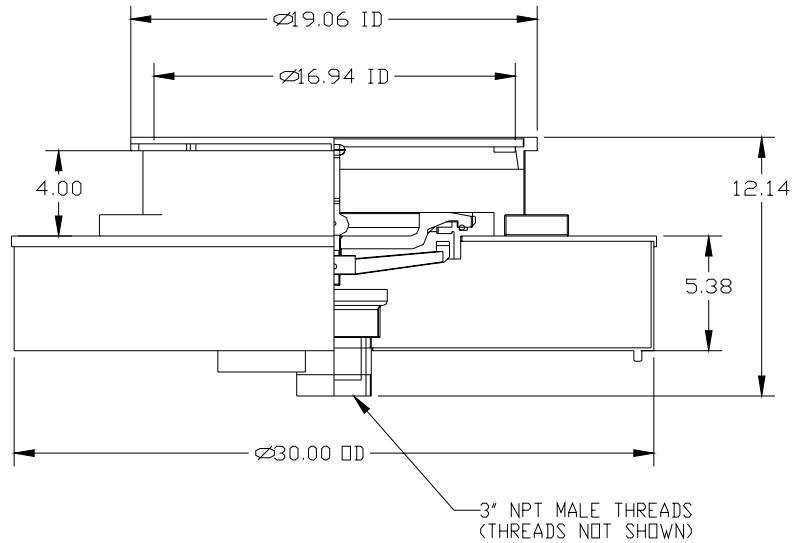
Product Specifications

Material

Part	Material
Spill Containment Body	12 gauge steel
Spill Container Manhole	Cast Aluminum
Spill Container Seal	Buna O-Ring
18" Manhole	Diamond Plated Steel
18" Skirt	12 Gauge Steel
Flame Suppression Screen	40 Mesh Brass
Tight Fill Adapter	Cast Iron
Tight Fill Cap	Cast Brass

MINIMUM BURIAL DEPTH

MINIMUM BURIAL DEPTH APPROXIMATELY 11.5" ±
CAPACITY IS 15.3 GALLONS



SIDE PARTIAL CUTAWAY VIEW